

Adapting your home



Find out more

Solihull Council's website has more information about adaptations to help you stay independent at home.

Visit www.solihull.gov.uk/asc and find out about:

- Disabled Facilities Grants
- case studies about minor and major adaptations
- occupational therapy assessments
- Housing Assistance Policy

If you are an SCH tenant, visit www.solihullcommunityhousing.org.uk and search for 'aids and adaptations'.

Leaflet date: March 2024



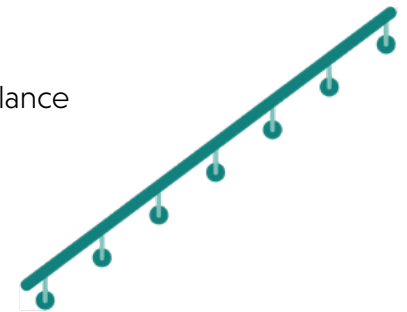
If you or your child are disabled or have long term health conditions, adaptations to your home can make it easier to live there independently for as long as possible. Adaptations can also help if you have a carer(s) who supports you.

Minor adaptations

Minor adaptations can usually be provided quickly and free of charge to anyone, whether you own your own home or rent from a private landlord or housing association.

Small changes may typically include:

- grab rails (or grab bars) to help you balance and reduce the risk of having a fall
- half-steps that reduce the height of steps in and around the home
- stair rails (or handrails or bannisters) to help you climb the stairs



To find out more about these and other minor adaptations and how to request them, please contact the Wellbeing Service at Solihull Community Housing.

Call: 0121 717 1515

Email: aidsandadaptationsinfo@solihullcommunityhousing.org.uk

Visit: www.solihullcommunityhousing.org.uk and search for 'aids and adaptations'.

Major adaptations

If your or your child's needs are more complex you may require a major adaptation to your home.

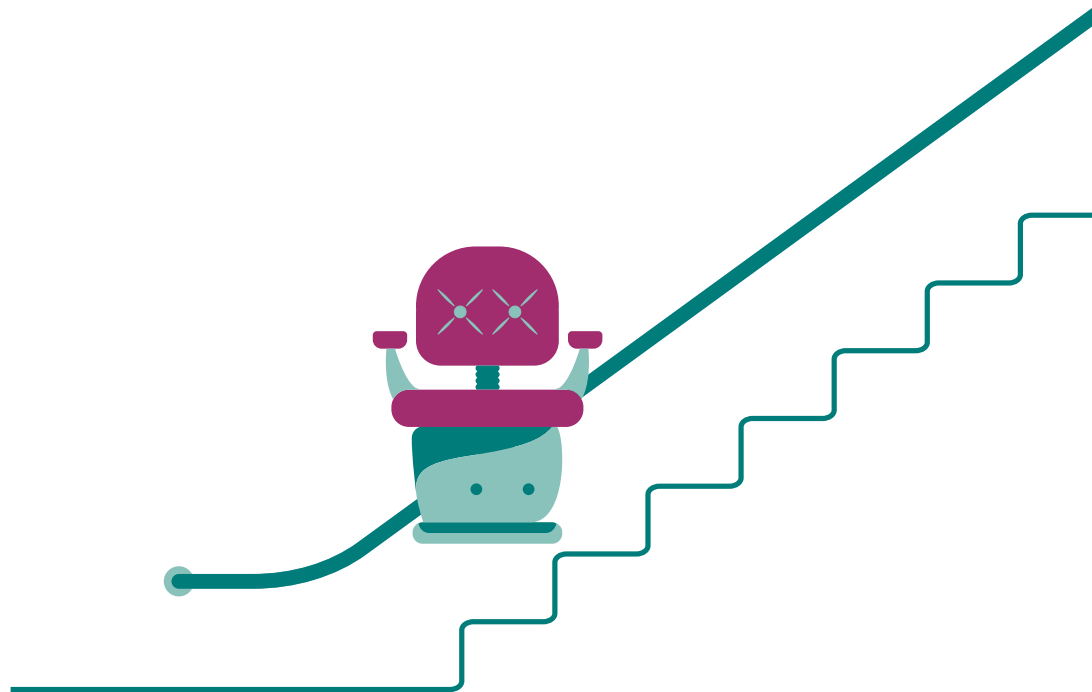
Major adaptations may include:

- door widening to allow easier access, for example for a wheelchair
- bathroom adaptation eg removing a bath and replacing it with a level access shower
- stairlift or through-floor lift to help you get upstairs
- ramp for wheelchair access to your home
- ceiling track hoist to support lifting and positioning someone, for example from bed to chair/wheelchair.

There are different ways of funding adaptations depending on who owns your home.

If you own your home or are a private tenant, you may be eligible for funding known as a Disabled Facilities Grant. Please read the section below.

If you are a Solihull Community Housing tenant, please contact SCH and ask about aids and adaptations. Contact details are in the **minor adaptations** section of this leaflet.



Disabled Facilities Grant

A Disabled Facilities Grant is funding available to enable major adaptations to your home.

A financial assessment (also known as a means test) may be required to access this funding. In some cases, the Council may be able to offer discretionary help. We can advise you about this when you contact us. An occupational therapy assessment is also required to assess your needs.

To find out more about major adaptations and if you are eligible, please contact our Solihull Connect Adult Social Care team or visit the Solihull Council website.

Call: 0121 704 8007

Email: ccadults@solihull.gov.uk